



## Report Cover Sheet

Report to:	Trust Board	
Date of the Meeting:	29 May 2019	
Agenda Item:	P1/0109/19	
Title:	Governance Approach	
Report prepared by:	Angela Wendzicha	
Executive Lead:	Liz Bishop	
Status of the Report:	Public	Private
	X	

Paper previously considered by:	Trust Board
Date & Decision:	1 March 2019 – the Board agreed for the implementation of the draft Governance structure in shadow form for a period of two months with the option to extend if necessary.

Executive summary/key points for discussion:	<p>The attached Governance Structure at charts 1 and 2 illustrate the final version following the agreed implementation in shadow form. A number of changes have taken place as follows:</p> <ul style="list-style-type: none"> <li>• The Performance Review Group has been stood down and the existing monthly Directorate Performance meetings have extended to include the Executive Directors.</li> <li>• The Trust subsidiary companies report directly into the Performance Committee in relation to achievement against Key Performance Indicators</li> <li>• Chemotherapy in the Community Group and Systemic Anti-Cancer Treatment Committee both report into the Drugs and Therapeutics Committee and</li> <li>• The Radiotherapeutics Committee reports into the Risk Management Committee.</li> </ul>
--	---

Action Required:	Discuss	X	Receive	
	Approve	X	Note	

Next steps:	<p>Subject to Board final approval, the revised Governance structure will continue to be embedded within the organisation.</p> <p>Effectiveness of the Committees will be subjected to Internal Audit during Quarter 4 2019/2020.</p>
-------------	---

*The paper links to the following strategic priorities (please tick)*

Deliver <b>outstanding</b>	√	Collaborative system	√
----------------------------	---	----------------------	---

care locally		leadership to deliver better patient care	
Retain and develop outstanding staff	√	Be enterprising	√
Invest in research & innovation to deliver excellent patient care in the future	√	Maintain excellent quality, operational and financial performance	√

*The paper relates to the following Board Assurance Framework (BAF) Risks*

BAF Risk	Please Tick
1. If we do not optimise quality outcomes we will not be able to provide outstanding care	√
2. If we do not prioritise the costs of the delivering the Transforming Cancer Care Programme we will not be able to maintain our long-term financial strength and make appropriate strategic investments.	√
3.If we do not have the right infrastructure (estate, communication & engagement, information and technology) we will be unable to deliver care close to home.	√
4. If we do not have the right innovative workforce solutions including education and development, we will not have the right skills, in the right place, at the right time to deliver the outstanding care.	√
5. If we do not have an organisational culture that promotes positive staff engagement and excellent health and well-being we will not be able to retain and attract the right workforce.	√
6. If we fail to implement and optimise digital technology we will not deliver optimal patient outcomes and operational effectiveness.	√
7. If we fail to position the organisation as a credible research partner we will limit patient access to clinical trials and affect our reputation as a specialist centre delivering excellent patient care in the future.	√
8. If we do not retain system-side leadership, for example, SRO for Cancer Alliance and influence the National Cancer Policy, we will not have the right influence on the strategic direction to deliver outstanding cancer services for the population of Cheshire & Merseyside.	√
9. If we do not support and invest in entrepreneurial ideas and adapt to changes in national priorities and market conditions we will stifle innovative cancer services for the future.	√
10. If we do not continually support, lead and prioritise improved quality, operational and financial performance, we will not provide safe, efficient and effective cancer services.	√

Equality & Diversity Impact Assessment		
Are there concerns that the policy/service could have an adverse impact on:	YES	NO
Age		X
Disability		X
Gender		X
Race		X
Sexual Orientation		X
Gender Reassignment		X
Religion/Belief		X
Pregnancy and Maternity		X

If YES to one or more of the above please add further detail and identify if a full impact assessment is required.

## Chart 1 – Version 3 FINAL May 2019/AW

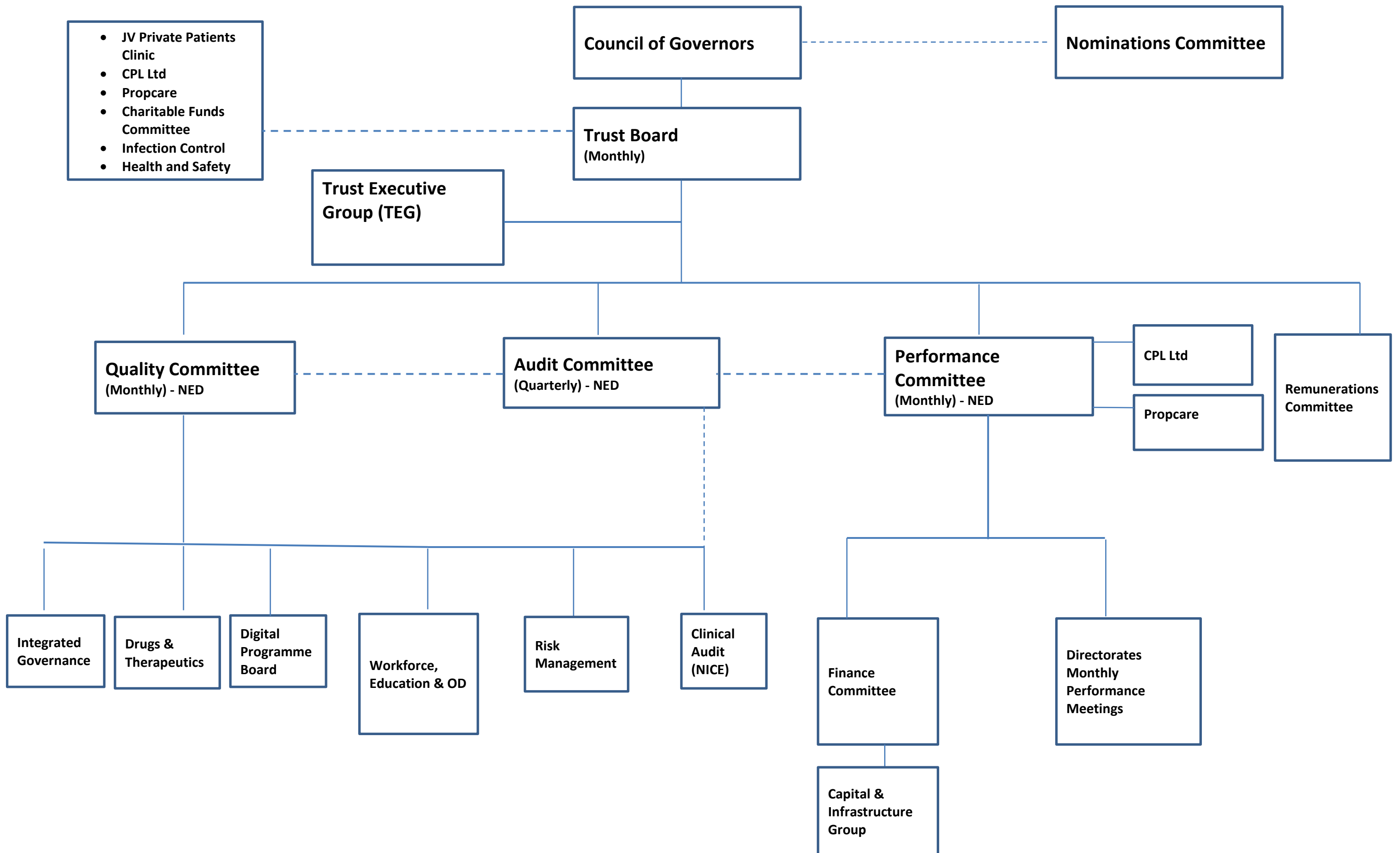


Chart 2 – Version 3 FINAL May 2019/AW

